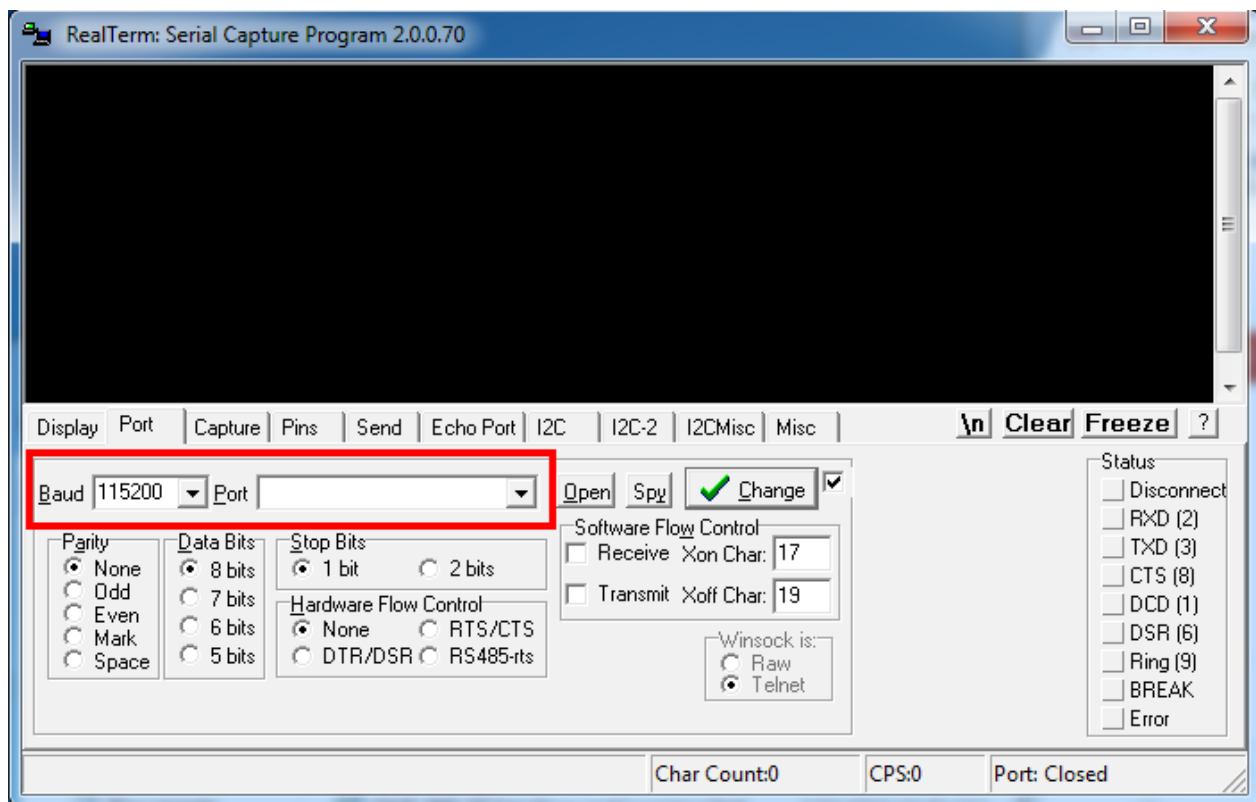
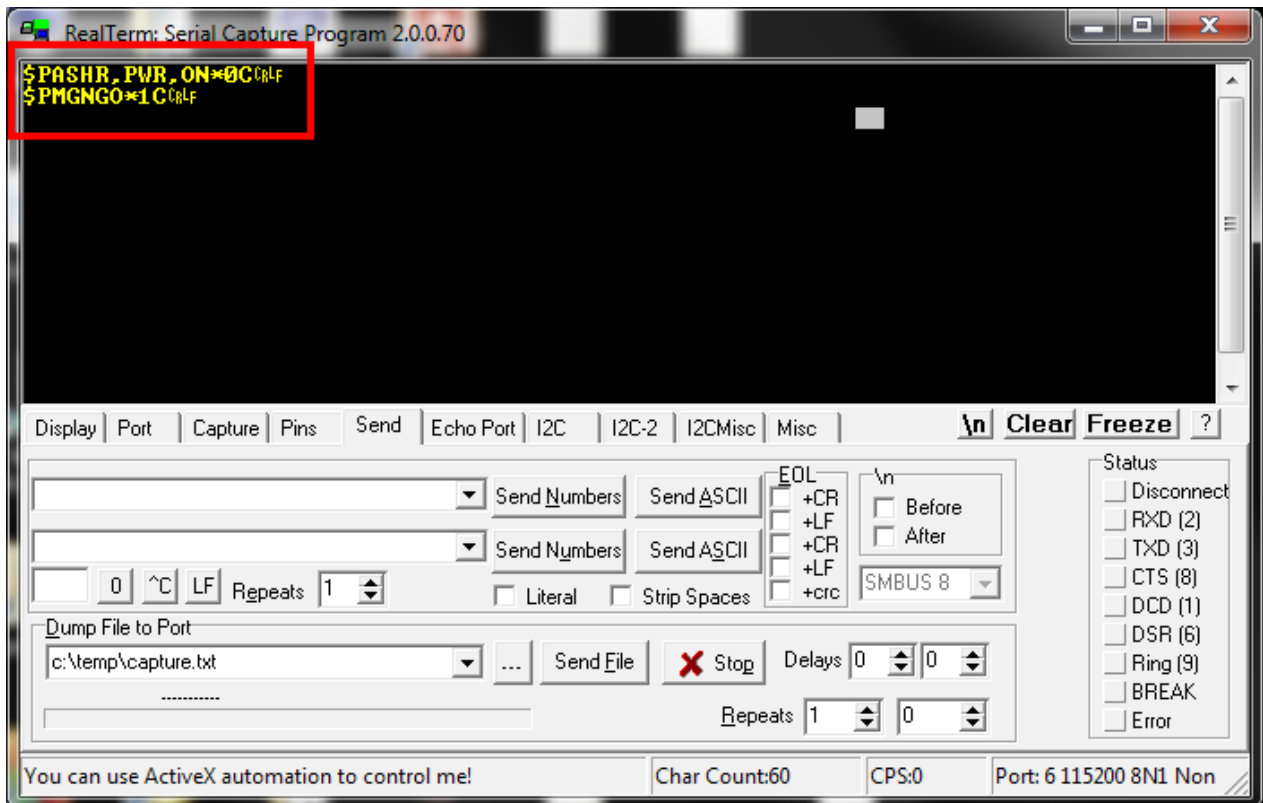
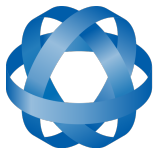


Trimble MB-Two License Upgrade

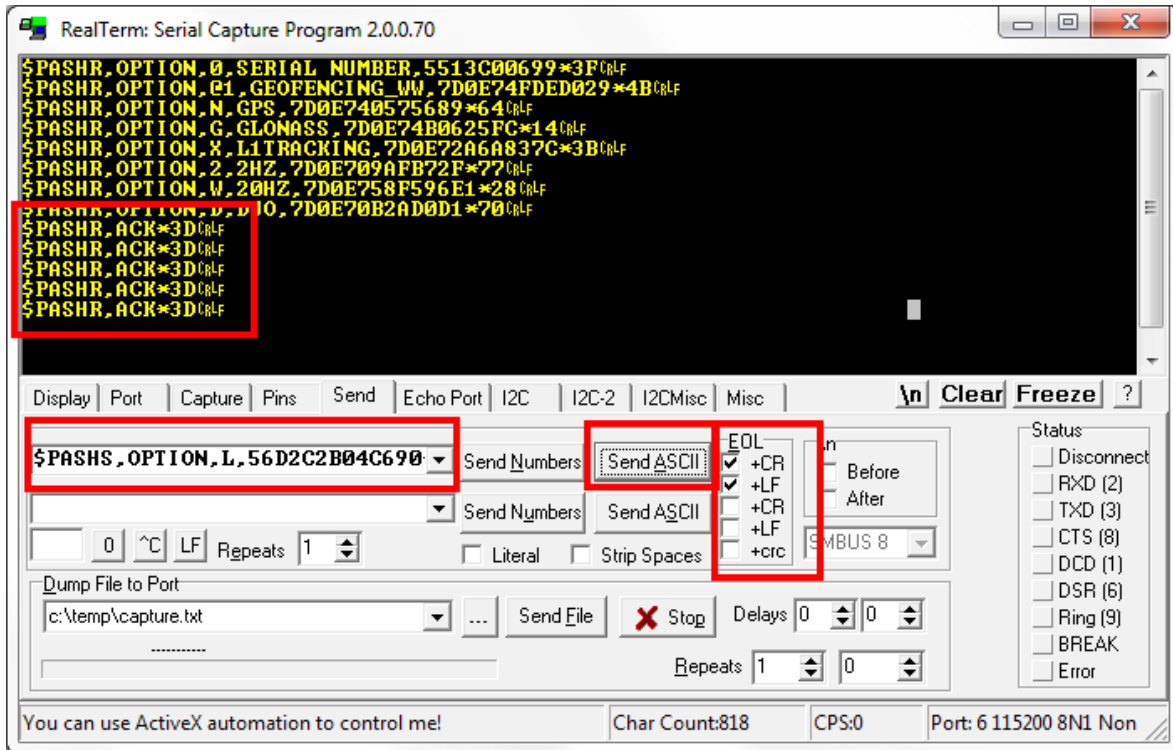
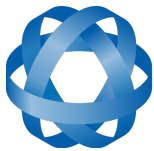
1. To upgrade a Trimble MB-Two that is in a Spatial FOG Dual unit, connect the Spatial FOG Dual unit with a Spatial FOG Dual breakout cable. Connect one end of a RS232-to-USB adaptor cable to the GNSS connector of the Spatial FOG Dual breakout cable and the other end to your PC.
2. Open up the Realterm software.
3. Set the baud rate to 115200 as shown in illustration below.



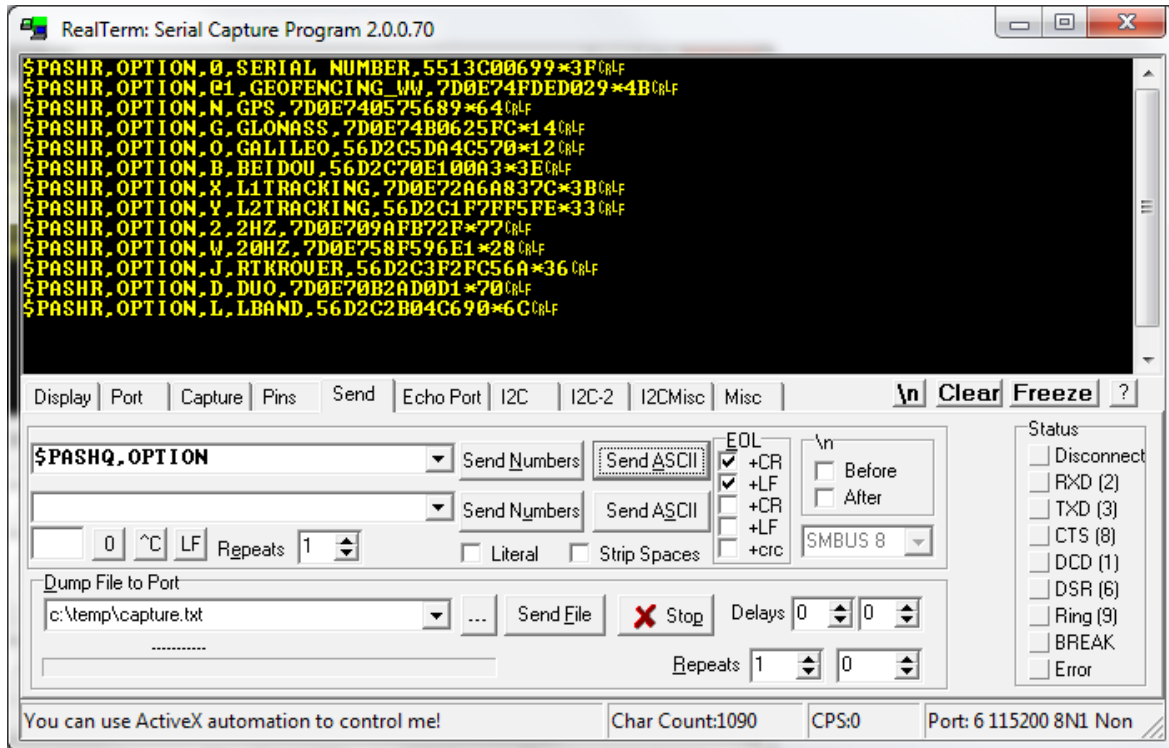
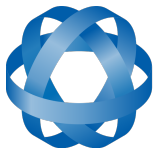
4. Find the correct COM port connecting to the RS232 cable. Press Open.
5. Connect power to the Spatial FOG breakout cable.
6. The Realterm software will display two phrases corresponding to “Power On” and “Power Good” as shown in the illustration below.



7. Ensure the top +CR and +LF EOL options are enabled, as shown below.
8. Type your Options Codes as received from Trimble. Once each code is typed in, press SEND ASCII. Make sure “\$PASHR,ACK” is returned from the MB-Two for each option installed. This is shown in the illustration below.



9. Check all upgrade options are installed by typing in \$PASHQ,OPTION and press SEND ASCII. There are a number of default options and you should now see your additional options for the upgrade. The illustration below shows an example (your installed options may differ).



10. Disconnect from Realterm and cycle the power to the Spatial FOG Dual unit.